

The task

The patients with recent reconstructive surgery of aorta and its branches has its reocclusion in a year. What measures should be taken to make a decision about a repeated operation:

The tests

The symptoms of perforated gastro-duodenal ulcer are:

1. Knife-like pain
2. A very hard like a board (plank) abdomen
3. Absence of the hepatic "flattening"
4. Free gas in abdominal cavity on X-ray films
5. All of them

What are the indication for operative treatment of Hashimoto`s goiter?

1. Compressive syndrome
2. The suspicion of malignant changes
3. Hypothireoidism
4. All of them

Cervical localization of gullet cancer is the indication for treatment

1. Combined
2. Radiotherapy
3. Surgical
4. All answers are right
5. All answers are wrong

In atherosclerosis obliterans for the first are damaged

1. Microcirculative vessel bed
2. Intraorgan vessels
3. Great (main) arteries of elastic type
4. Great (main) arteries of muscle type
5. Arteriovenous shunts

The most effective diagnostic method in patients with LG tumors less than 1 cm is

1. Mammography
2. USD
3. Thermography
4. Palpation
5. Radioisotope diagnostics

Images Methods of investigations, Diagnosis???

Image 1



Image 2

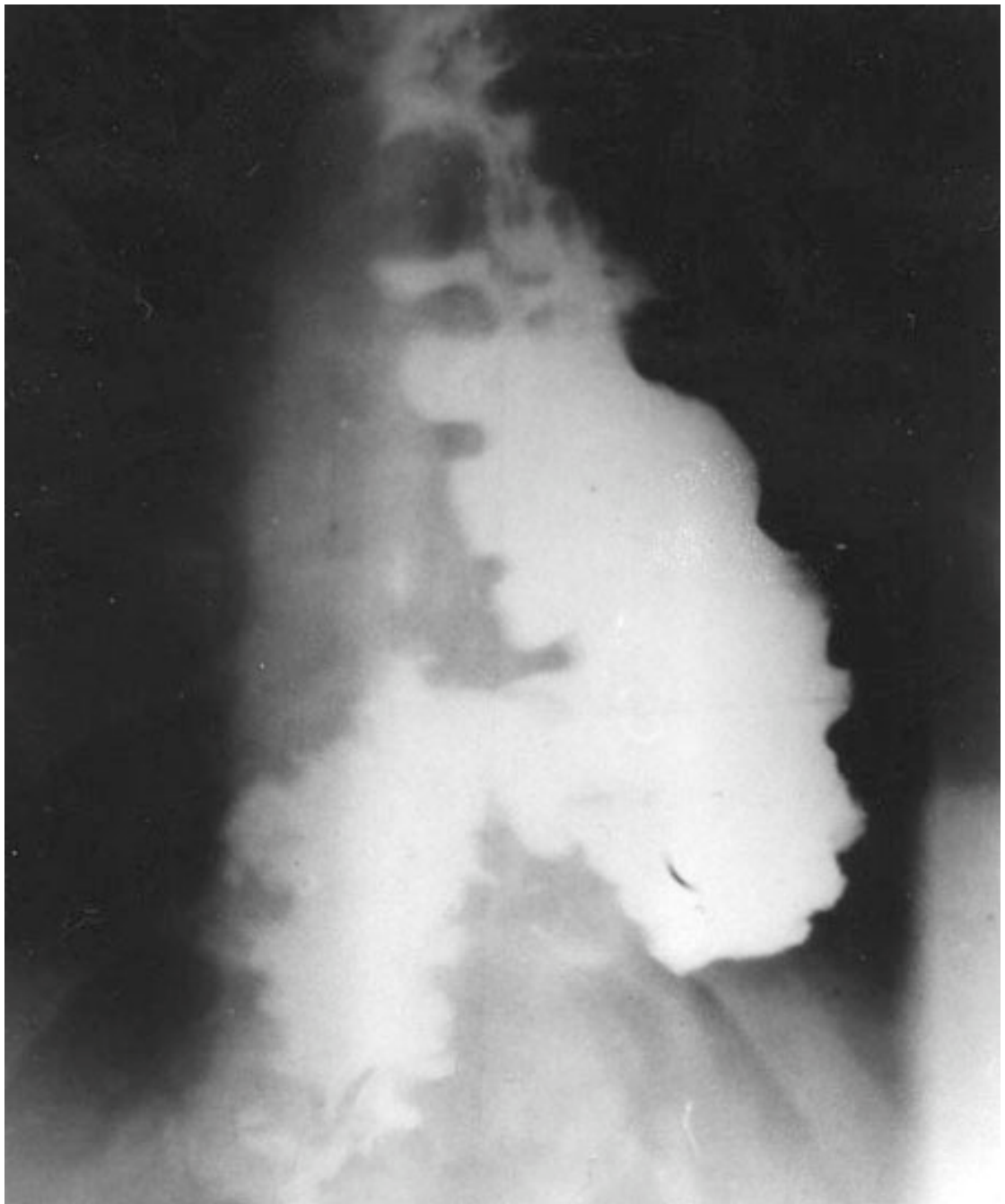


Image 3

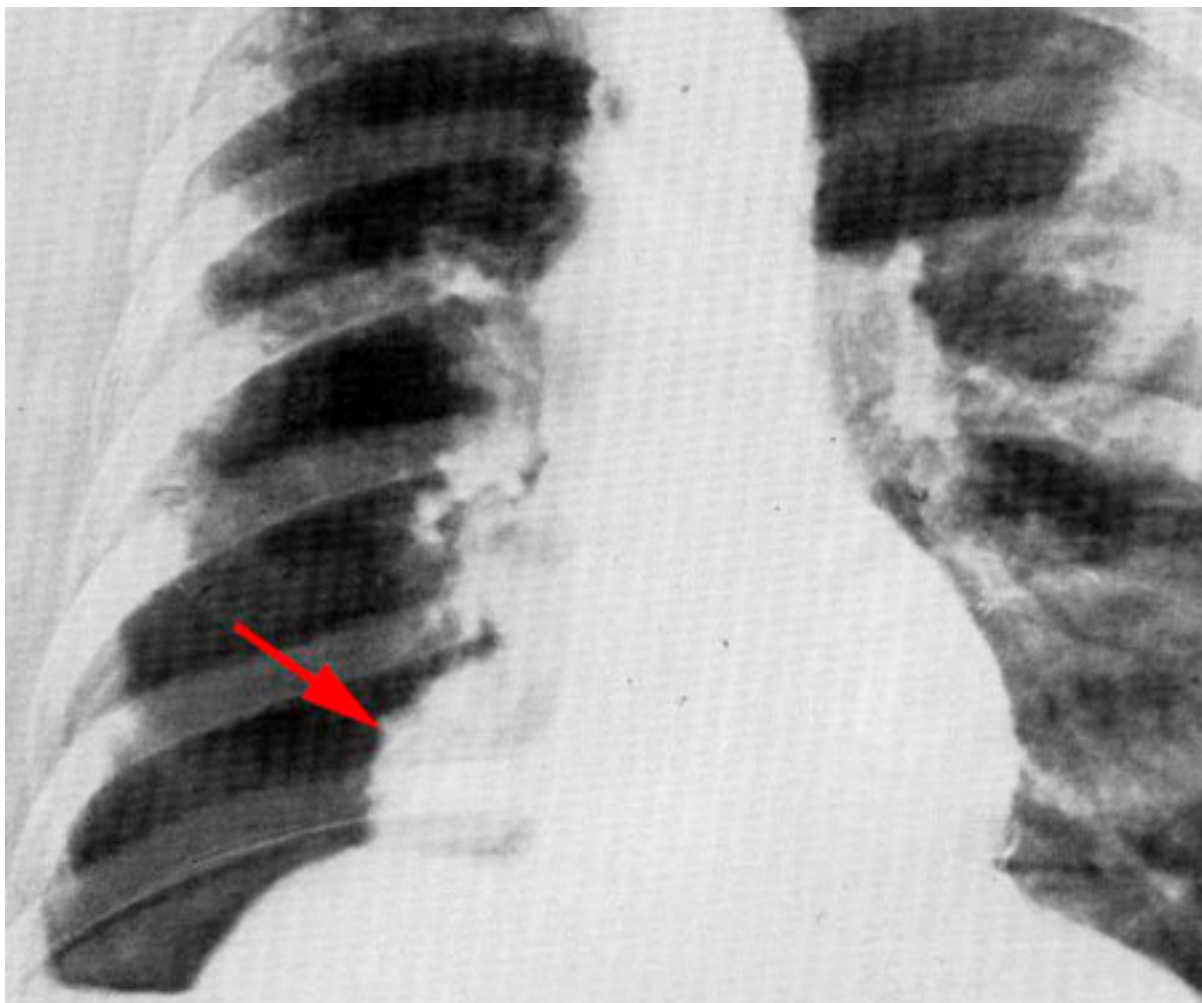


Image 4

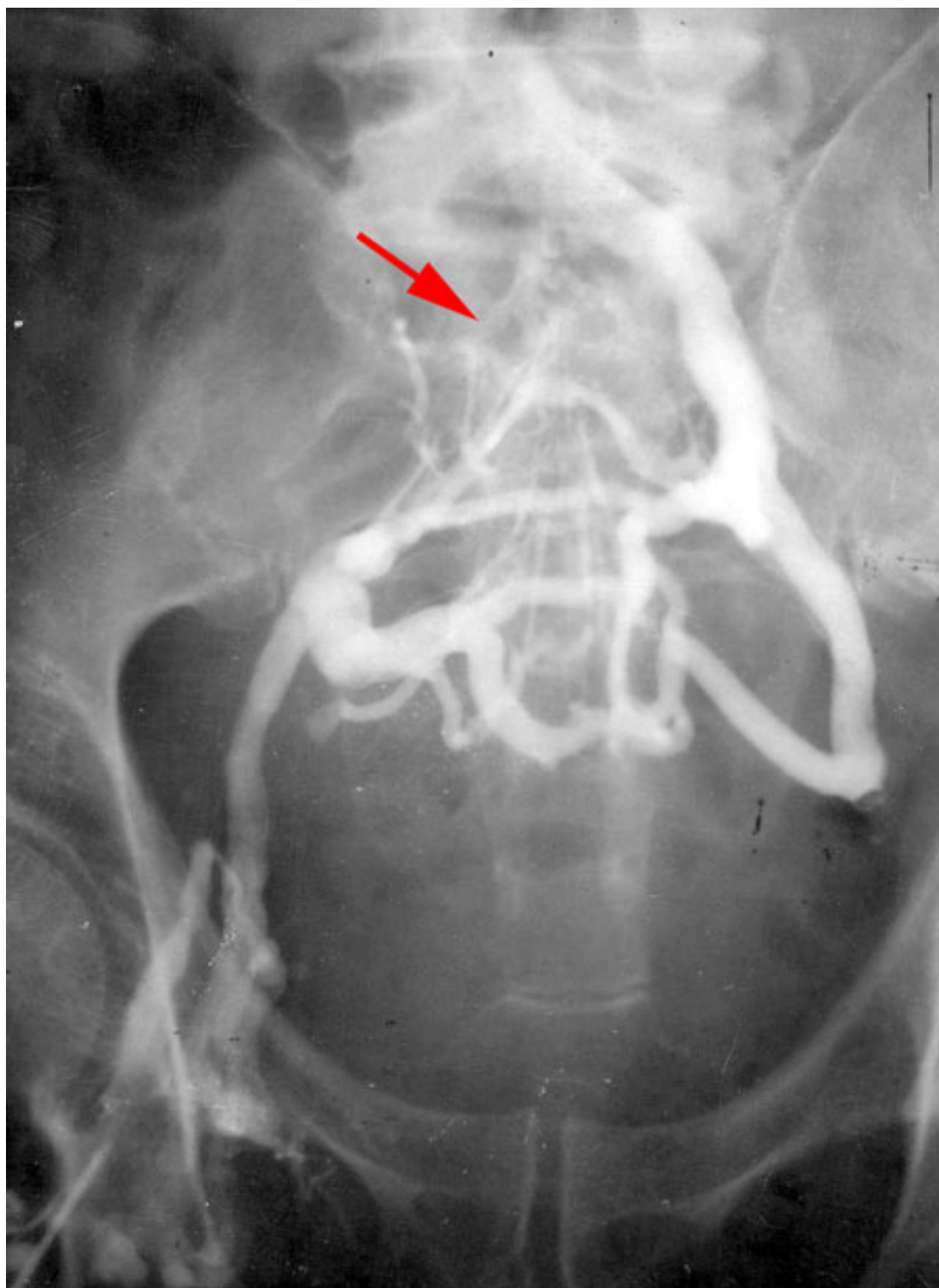


Image 5

